

***Preliminary Results***  
**Summary of the Survey of  
Blood Transfusion  
Practice in Indiana  
2007**

Indiana State Association  
of Blood Banks  
Education Committee



Presented by Jayanna Slayten, MS, MT(ASCP)SBB  
ISABB Education Committee

These are the  
preliminary findings  
of the 2007 Survey.

A complete analysis of the  
2007 data and comparison to  
previous surveys will be  
summarized by and  
forwarded to the participants.

# Survey Development

- A survey was developed covering
  - Blood Product Usage
  - Serologic Techniques and Transfusion Protocols
  - Transfusion Reactions
  - Lab Management
- The survey revised
  - Demographics updated
  - Survey has new questions
  - Survey repeated some questions

# Survey

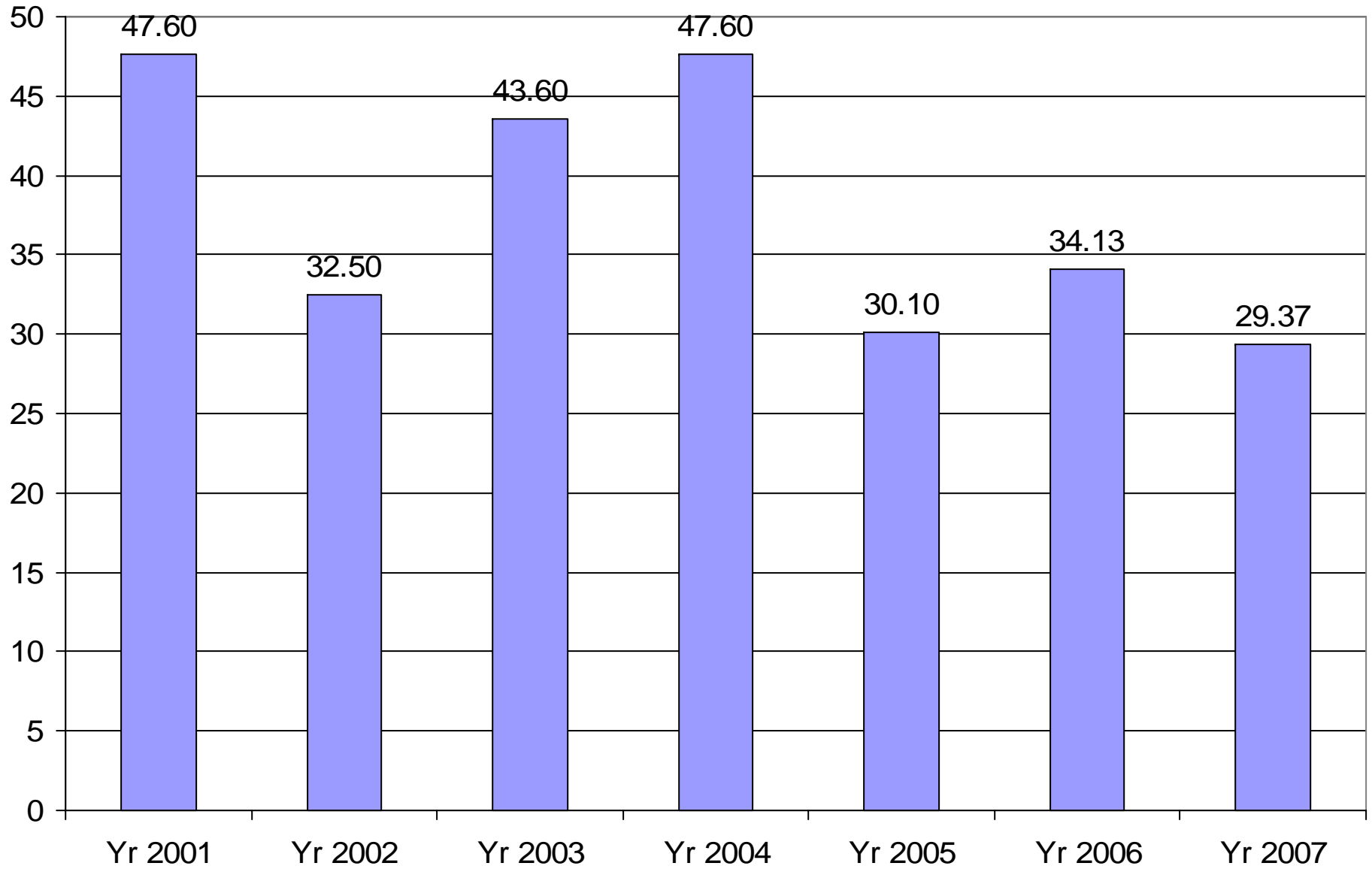
- The survey was emailed and faxed to Indiana Hospital Transfusion Services
- The hospitals were asked to respond
  - fax the completed survey (OR)
  - Email back the completed survey
- The surveys were accepted for three weeks
  - August 9 – September 7, 2007

# Results: Survey Response

	<u>01</u>	<u>02</u>	<u>03</u>	<u>04</u>	<u>05</u>	<u>06</u>	<u>07</u>
• Total surveys faxed	126	126	126	126	126	126	126
• Total completed surveys	60	41	55	60	37	50	37
• Percent response rate of	47.6	32.5	43.6	47.6	30.1	39.1	29.4

- Average response rate over the last 7 surveys = 38.5%
- Results more difficult to assess trends with low response rate
- Results were split out by facility size for 2007 analysis.

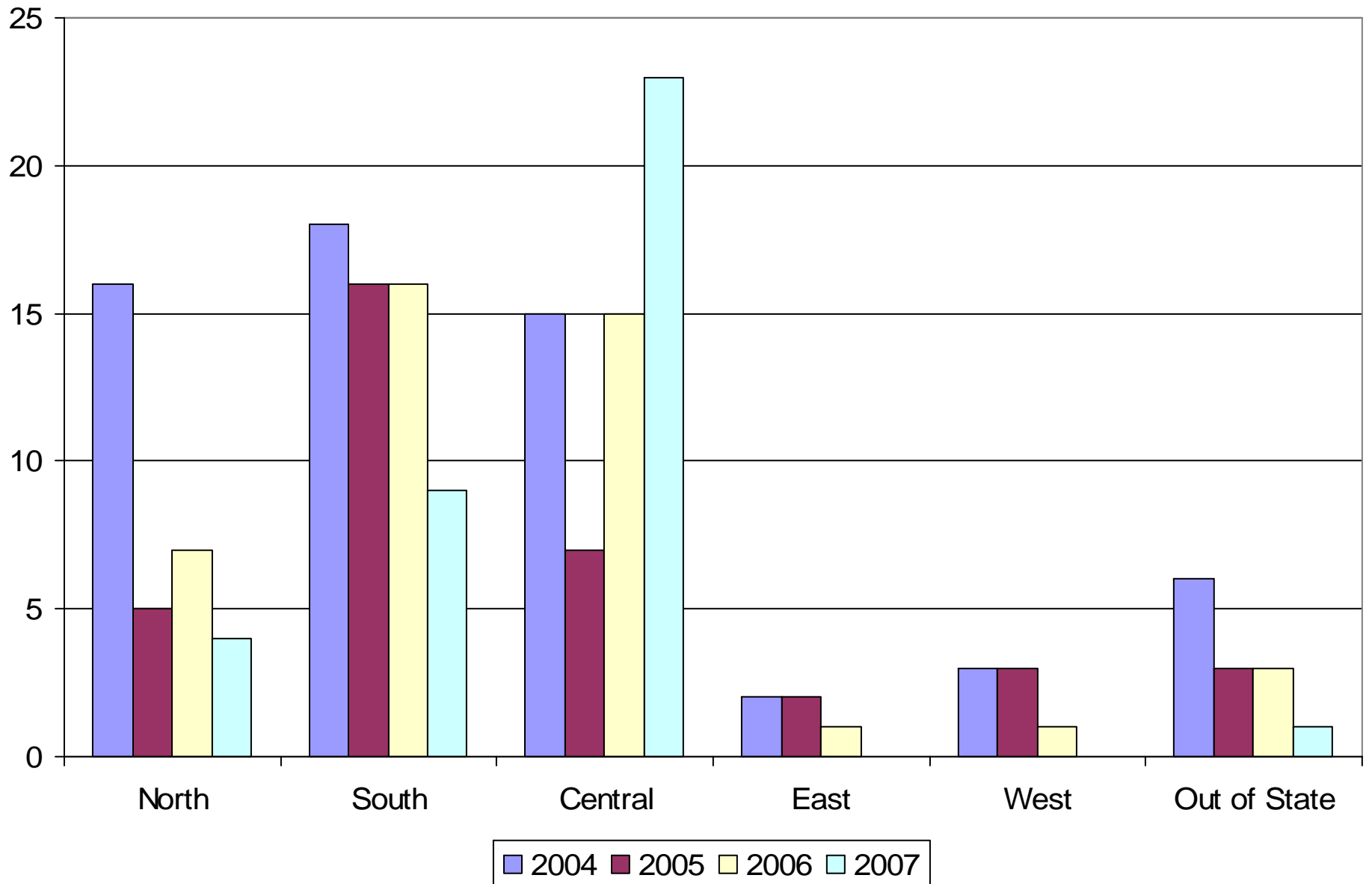
## Comparison 2001-2007: Percentage Response Rates by Year



# Response Group - Location

- What is the make up of the response group?

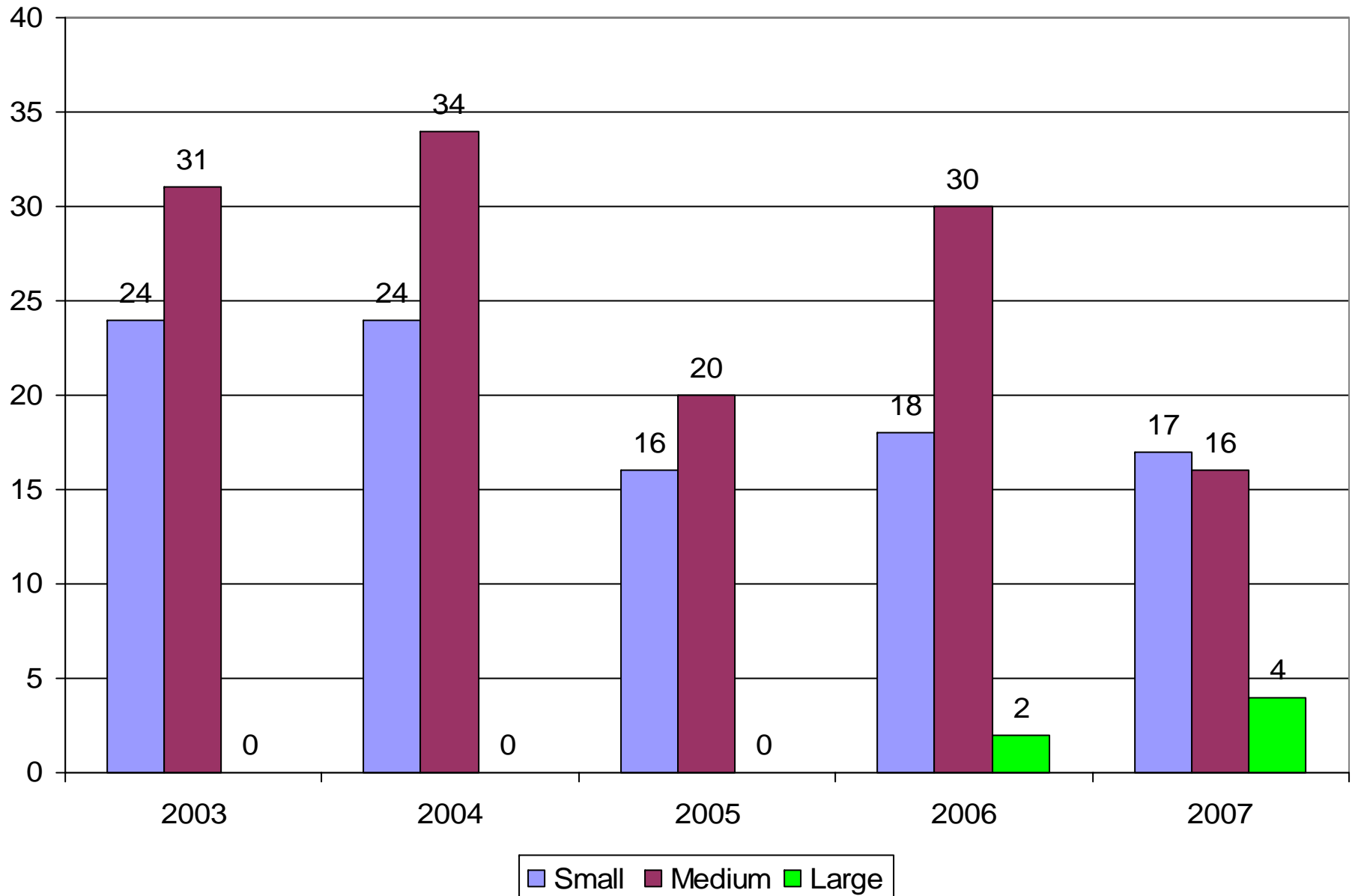
## Reponse Group by Part of the State 2004-2007



# Response Group – Size of Facility

- What size facilities responded to the survey?

## 2003-2007 Response Group by Size of Facility



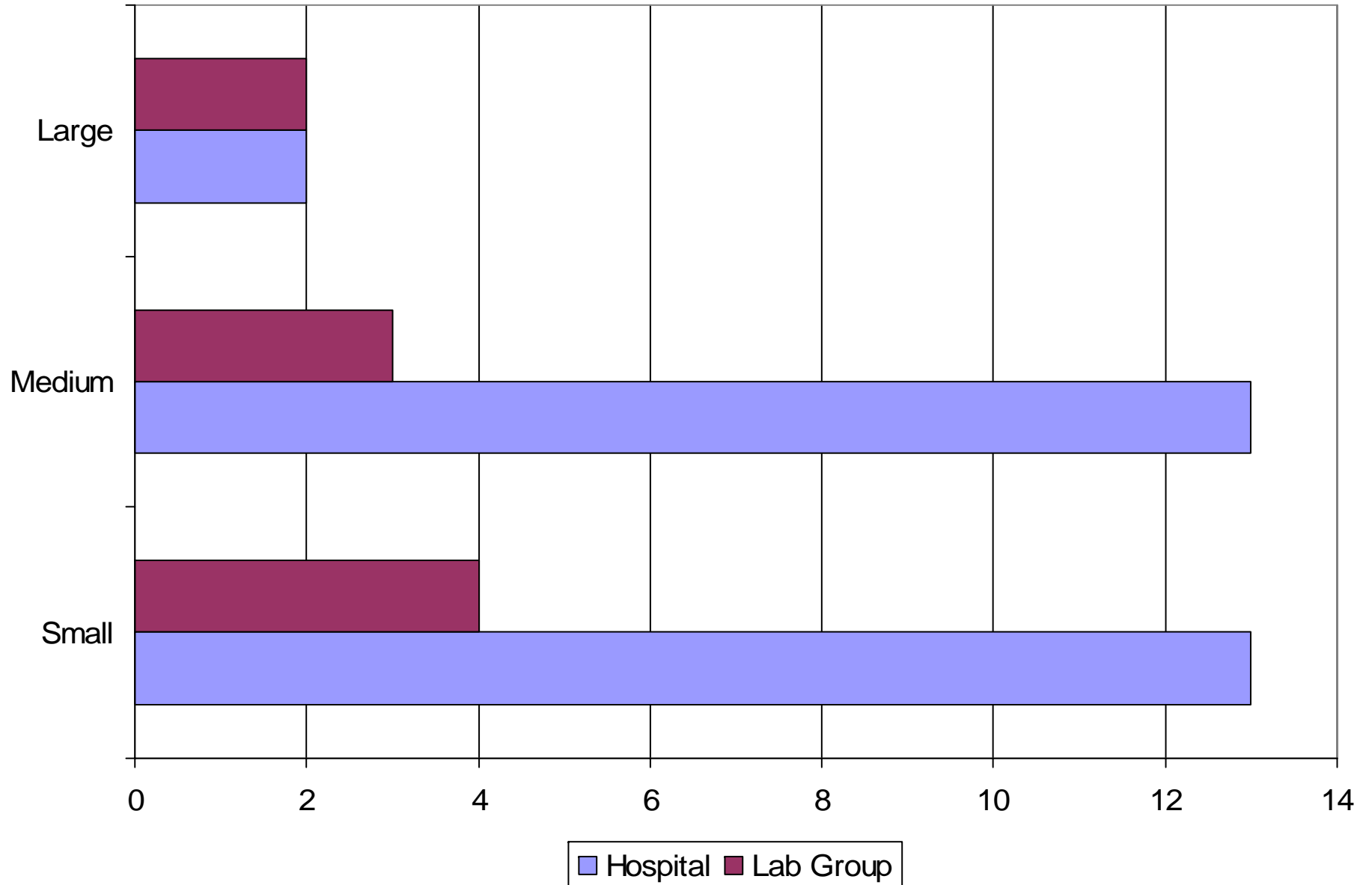
# Lab Type

- New Question for 2005/ 2006 and 2007
  - Question was added with the change of labs from hospital based to privatization
  - The response group was asked if the lab is hospital based or private lab

	<u>2005</u>	<u>2006</u>	<u>2007</u>
• Hospital Based Lab	94%	88%	75%
• Lab Group based in a Hospital	6%	12%	25%

- It is anticipated that this demographic will change within the next 5-10 years.

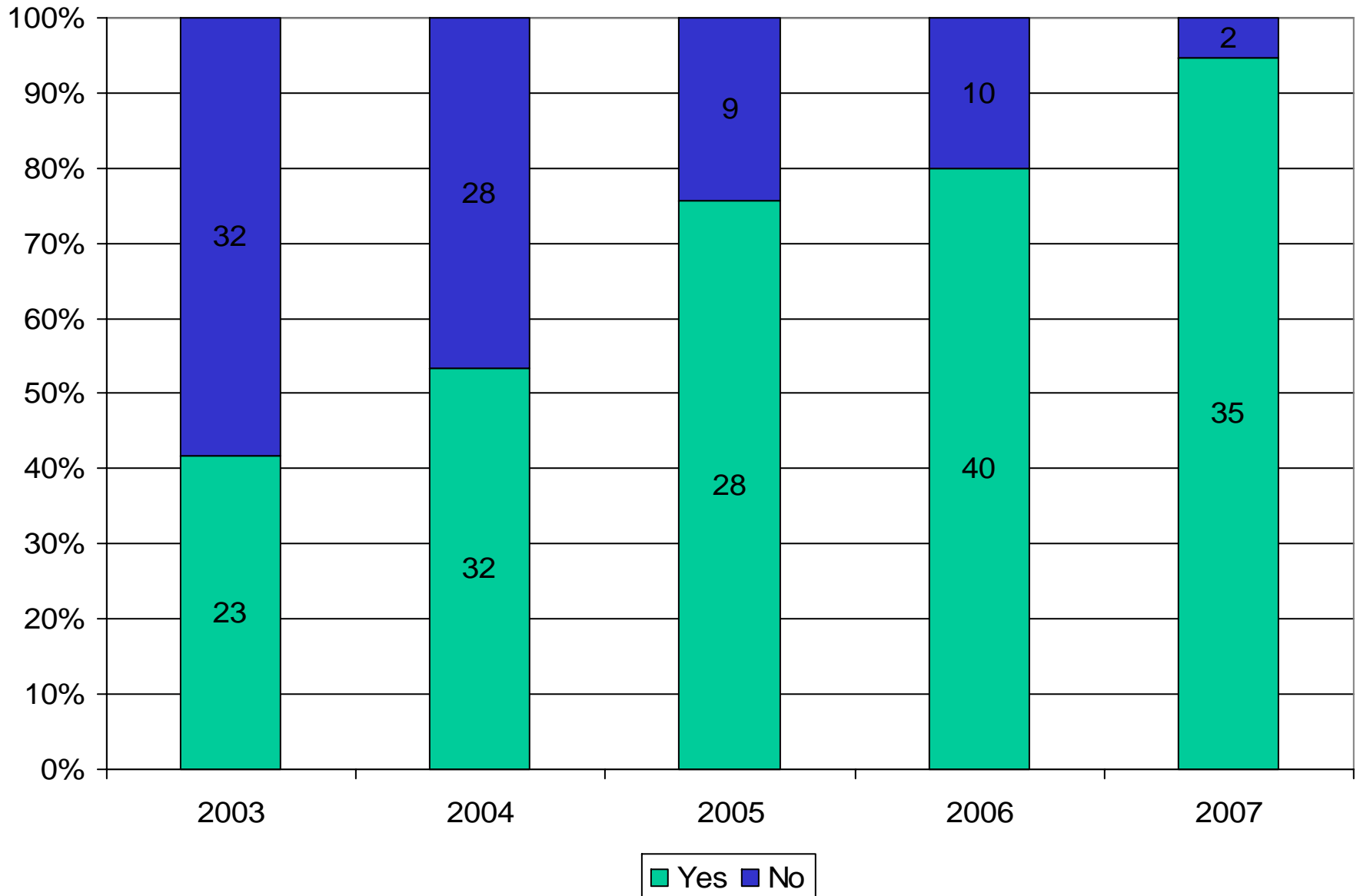
## 2007 Breakdown - Type of Facility by Size



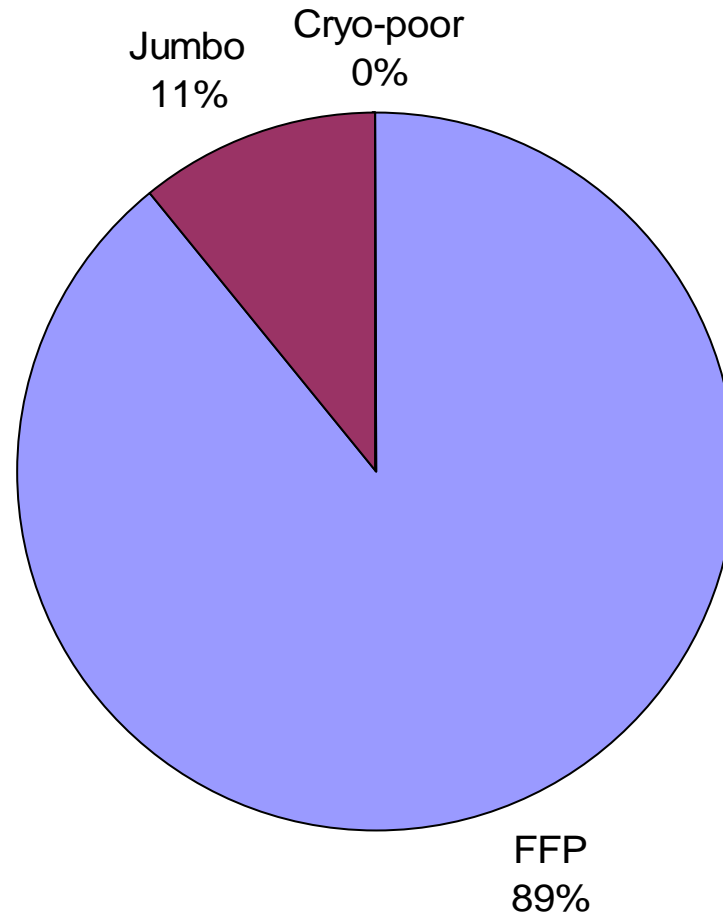
# Platelets and Plasma

- Does your facility only order pheresis platelets?
  - 2006
  - 2005 compared to 2003 and 2004
- What type of plasma does your facility primarily order?

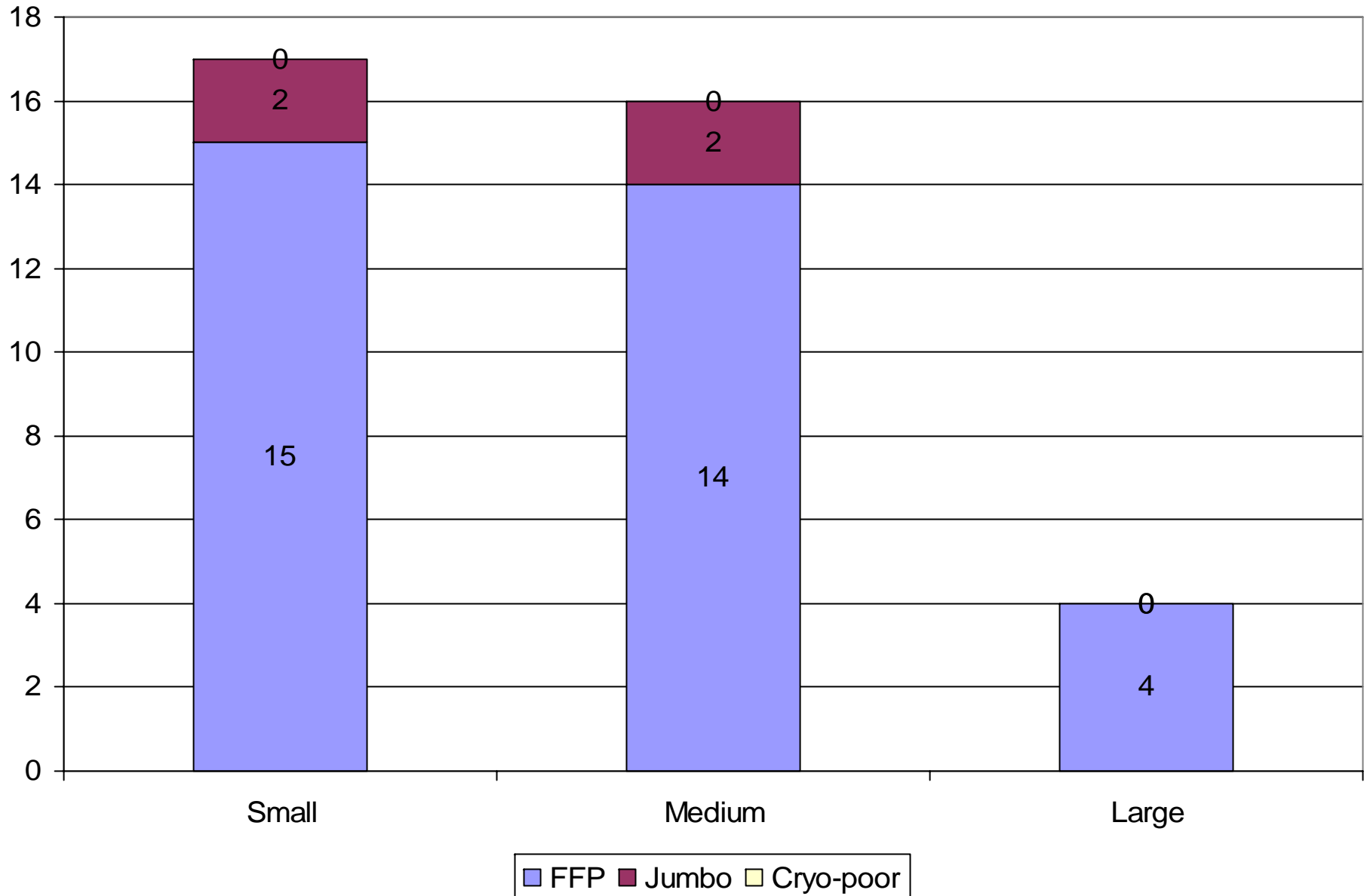
## Does your Facility Only Receive Pheresis Platelets?



# 2007 Most Common Type of Plasma Product Ordered in the State in 2007



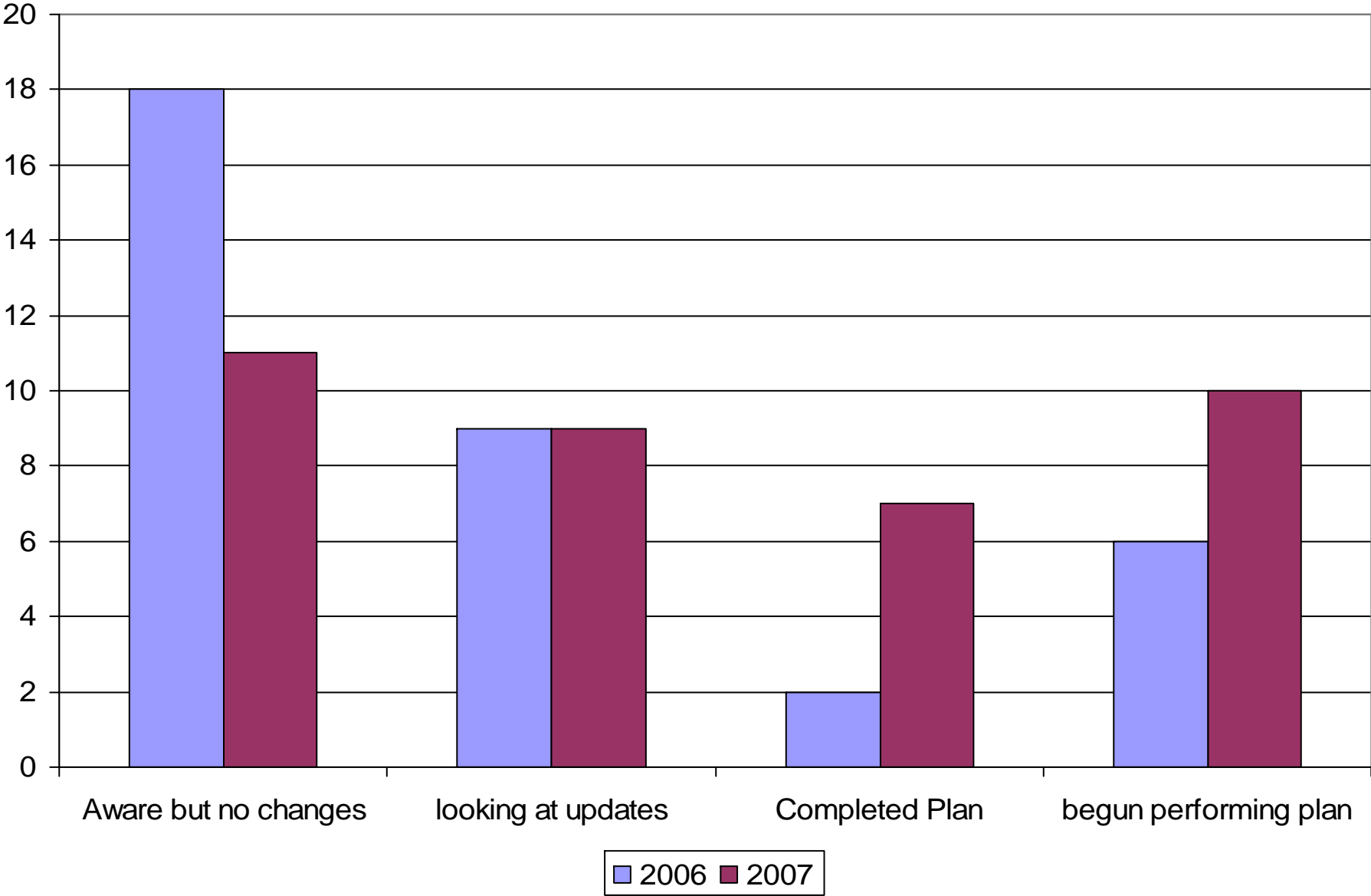
## 2007 - Breakdown of Plasma Type by Size Facility



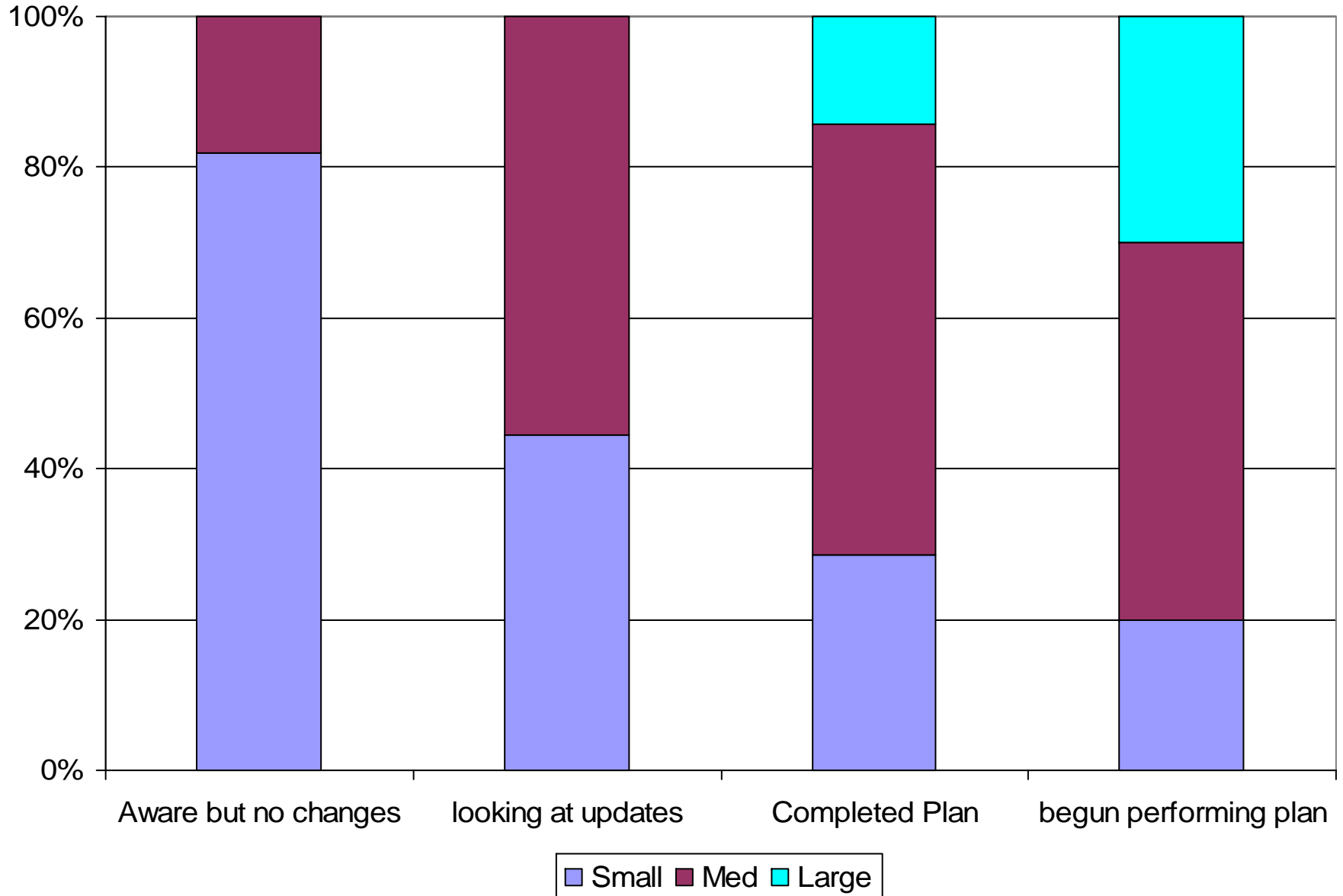
# ISBT

- The majority of respondents were aware of the impending ISBT change.
- Response to ISBT
  - Aware, but no changes
  - Looking at updates
  - Completed Plan
  - Begun Performing Plan

# 2006-2007 Comparison of ISBT Conversion Development



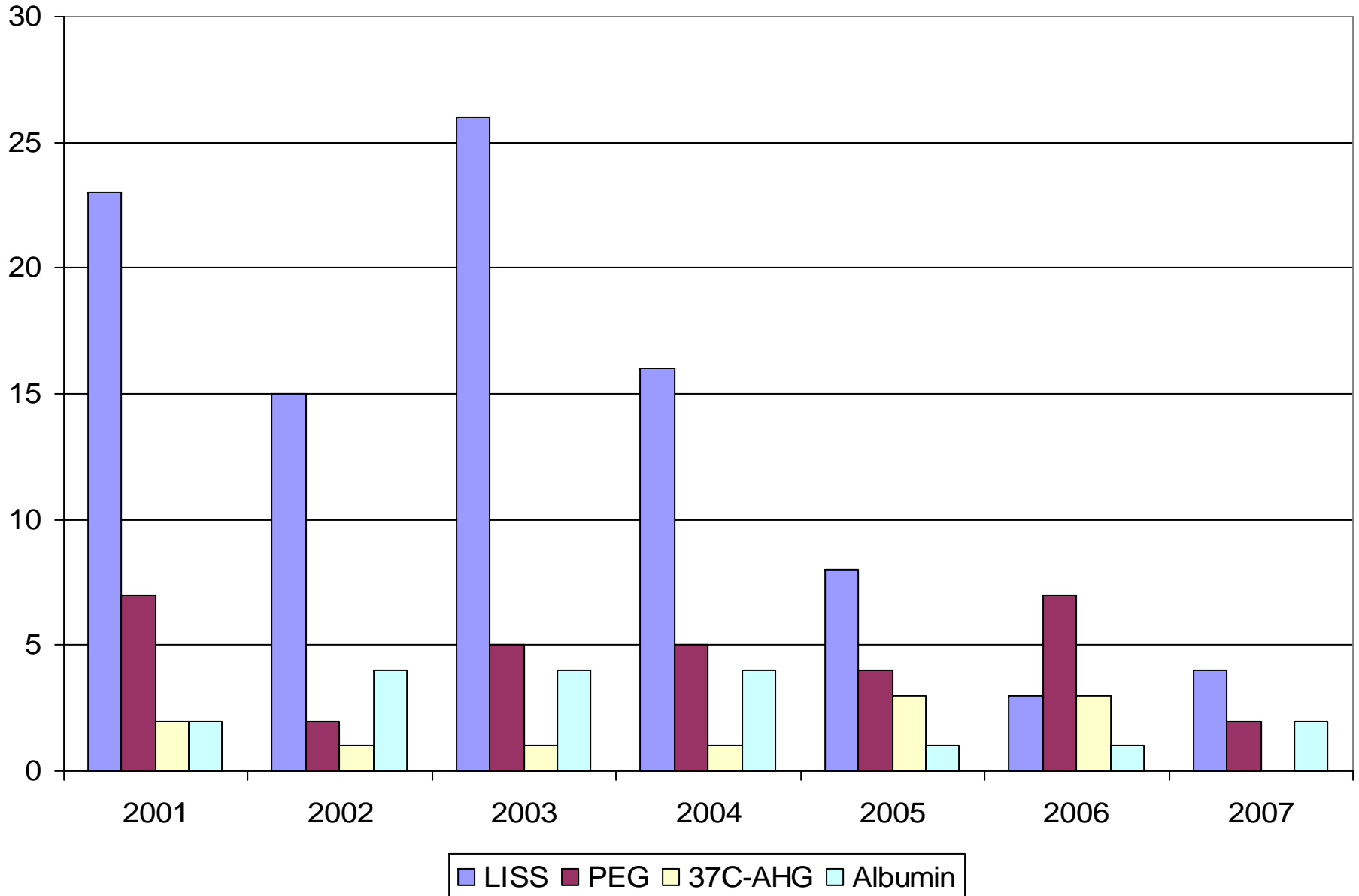
## Facility Size Comparison - 2007 Preparation for ISBT Conversion



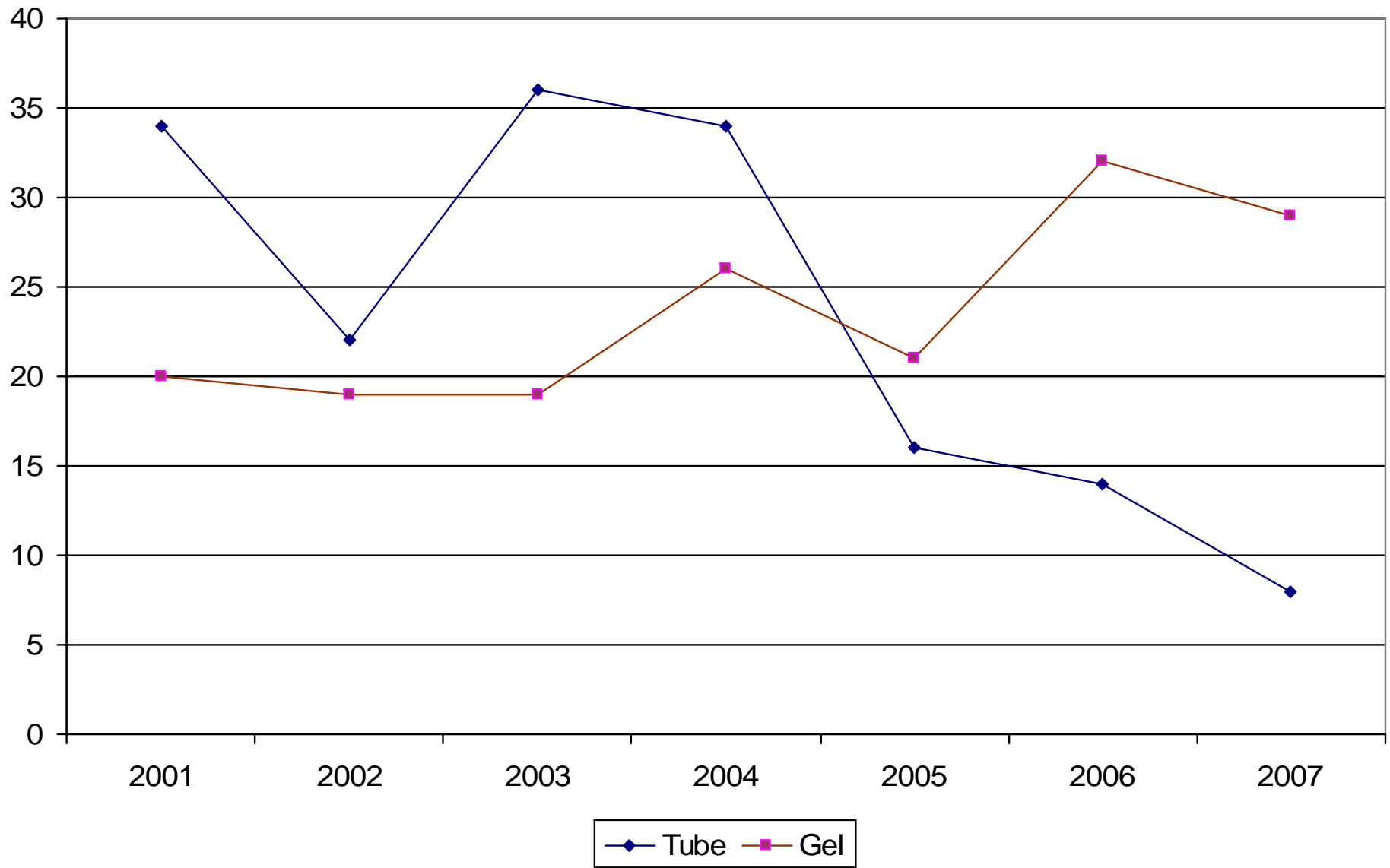
# Serologic Protocols

- What is the primary method of antibody screening / identification?
  - **Tube:** All methods are currently being used
  - **Tubeless:** Only Ortho Gel

## 01-07 Tube Methods by type in the State of Indiana



## 2001-2007 Conversion from tube to gel in State of Indiana



# Serologic Protocols

## AHG Reagent Used

- What type of AHG reagents does our facility use?

	<u>2003</u>	<u>2004</u>	<u>2005</u>	<u>2006</u>	<u>2007</u>
• Polyspecific AHG	47%	37%	30%	13%	14%
• IgG AHG	53%	63%	65%	87%	86%

- This question continues to demonstrate that more facilities are using IgG-AHG vs. Poly-AHG for AHG testing.

# Serologic Protocols

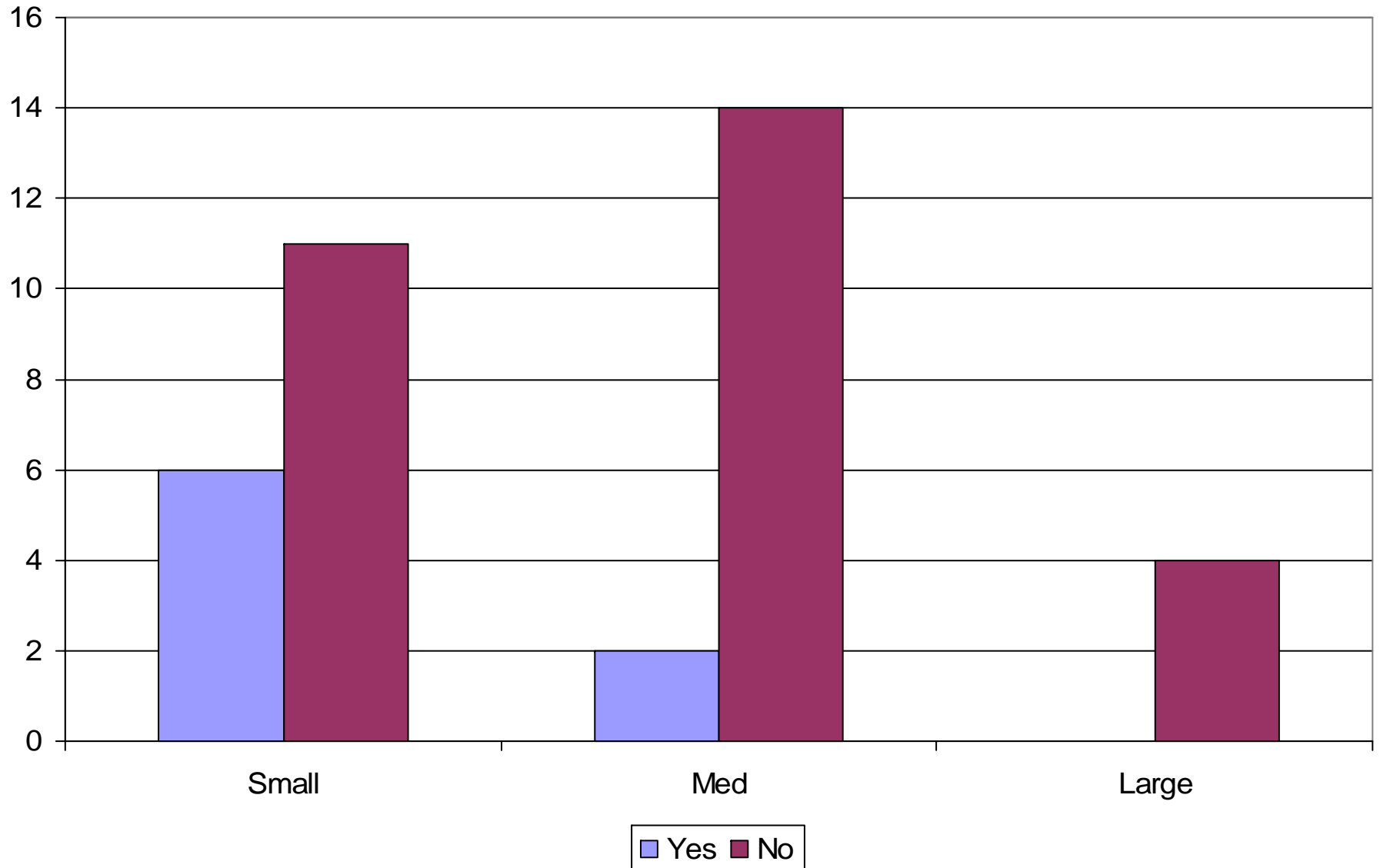
## Weak D Testing

- Does your facility complete the weak D testing on all D- negative recipients / patients?

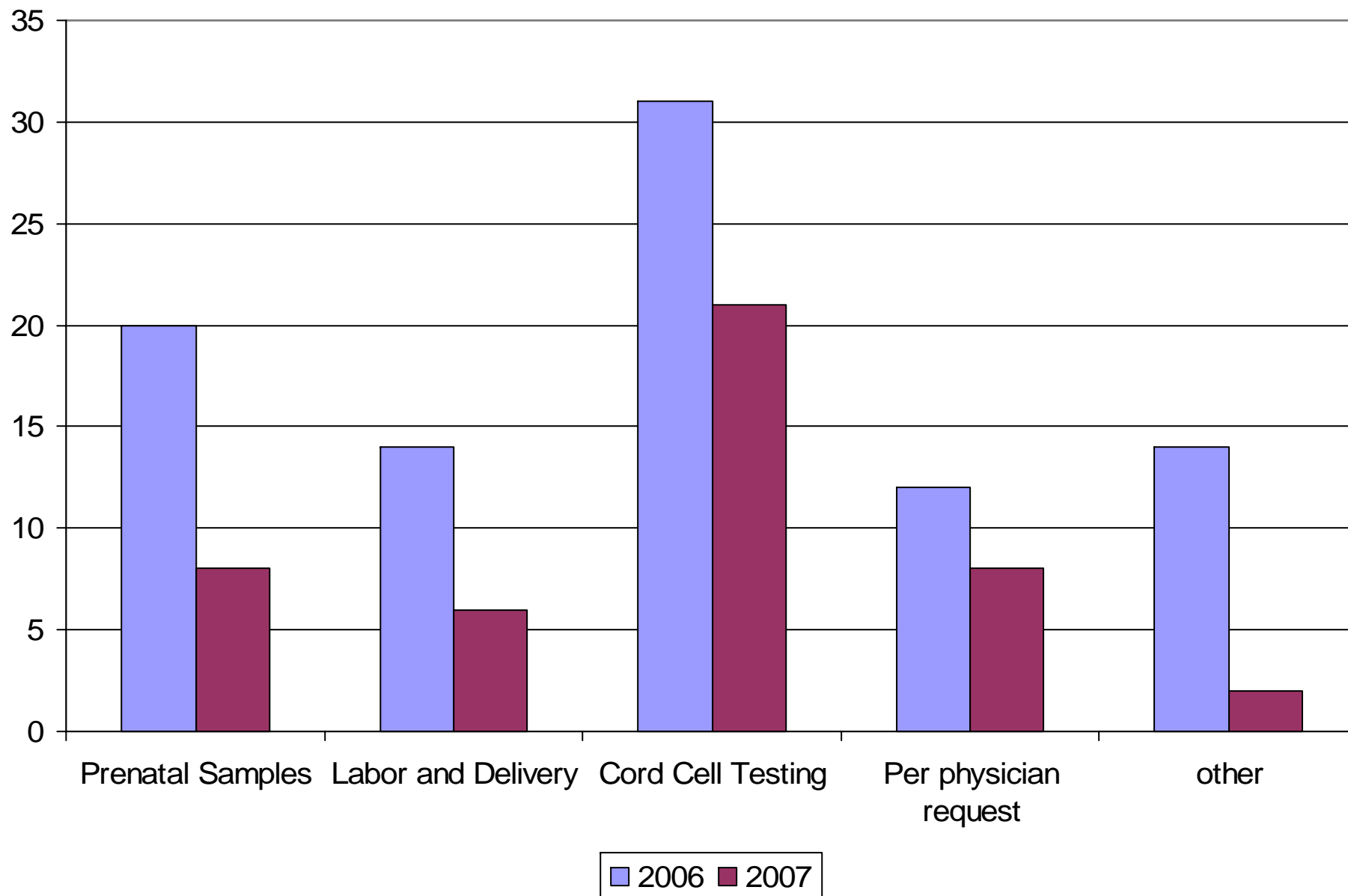
	<u>2003</u>	<u>2004</u>	<u>2005</u>	<u>2006</u>	<u>2007</u>
• Yes, Full Weak D	60%	45%	38%	21%	28%
• <u>No, No Weak D</u>	<u>40%</u>	<u>55%</u>	<u>62%</u>	<u>79%</u>	<u>72%</u>

- Fewer Indiana facilities are completing weak D testing routinely
- 2006 and 2007 surveys reconfirm this trend

## 2007- Does your facility testing do weak D testing? Facility Size Comparison



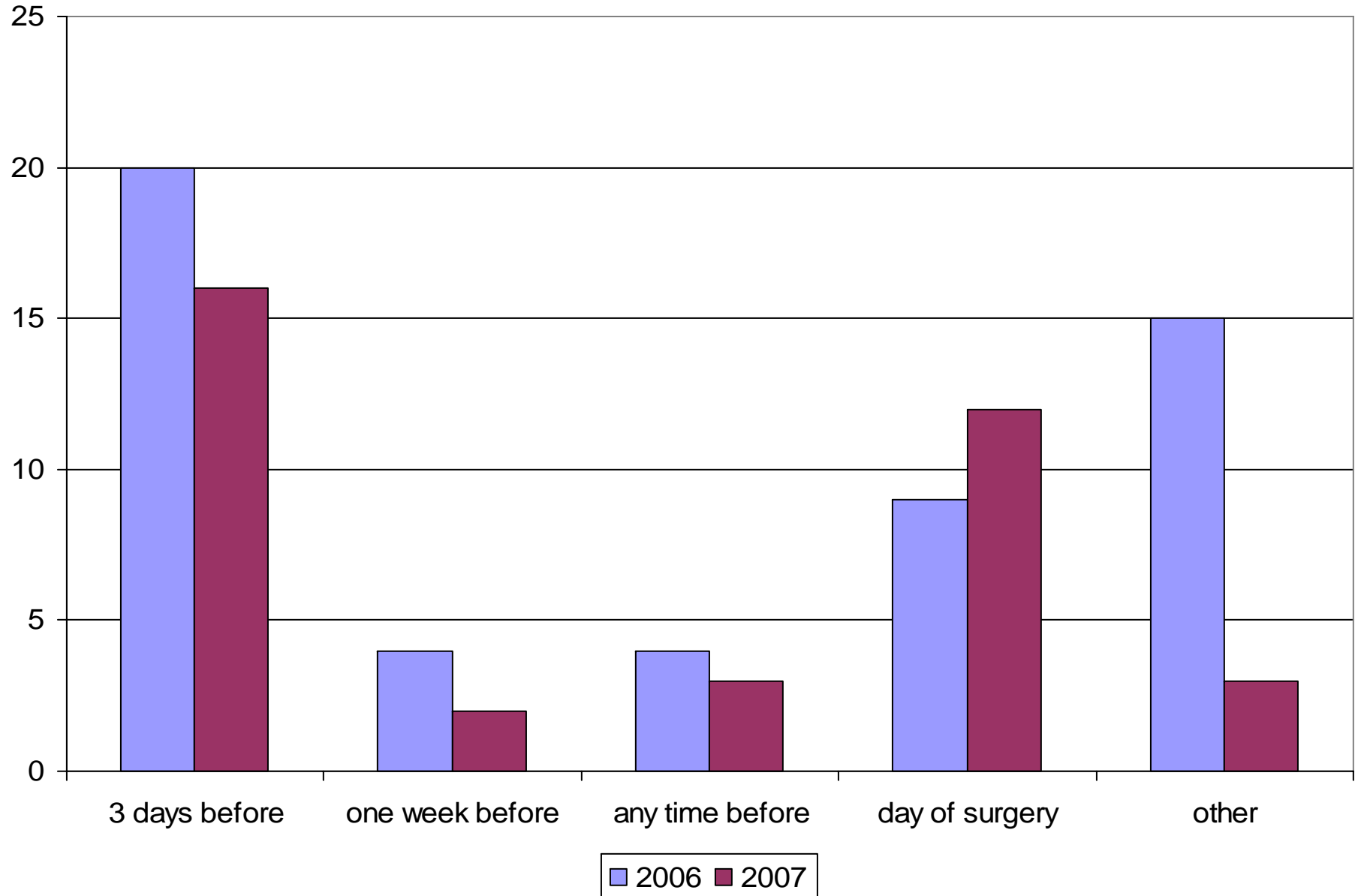
## 06-07 When Weak D testing is completed in the blood bank



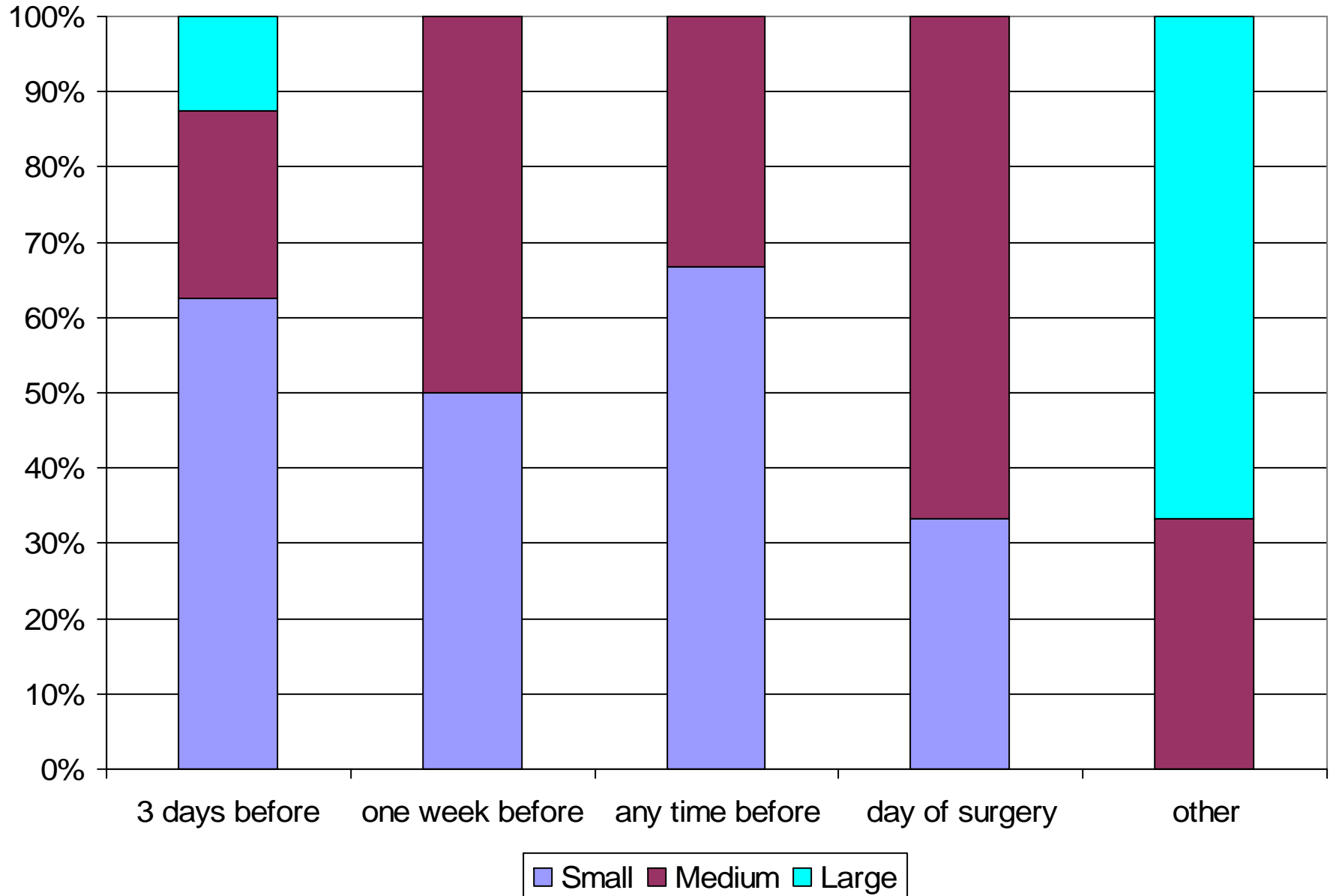
# Transfusion Service Protocols

- Pre-surgical T and S
  - When are they drawn?
  - When do you “band” the patient?

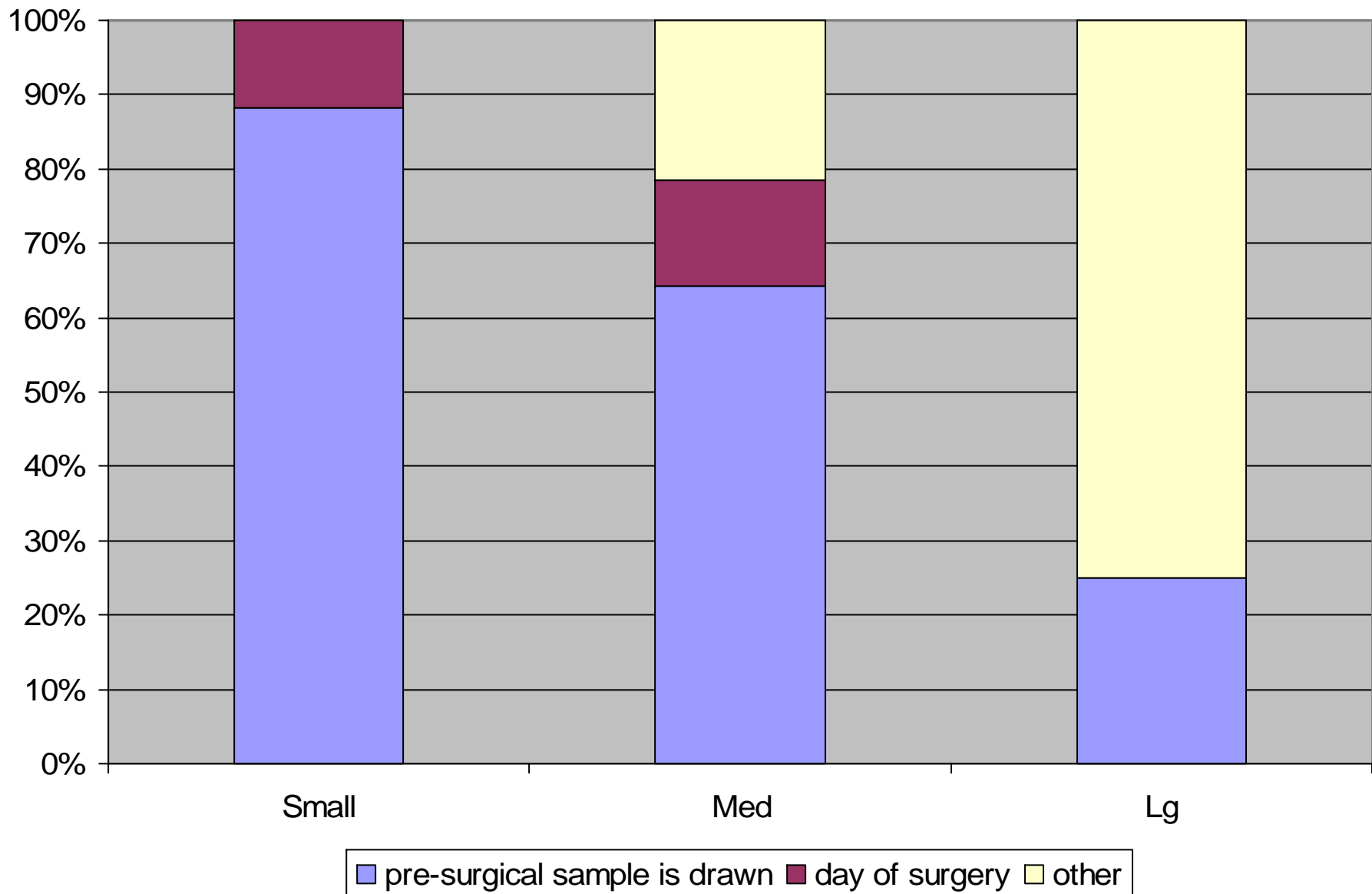
## 06-07 When Are Presurgical Samples Drawn?



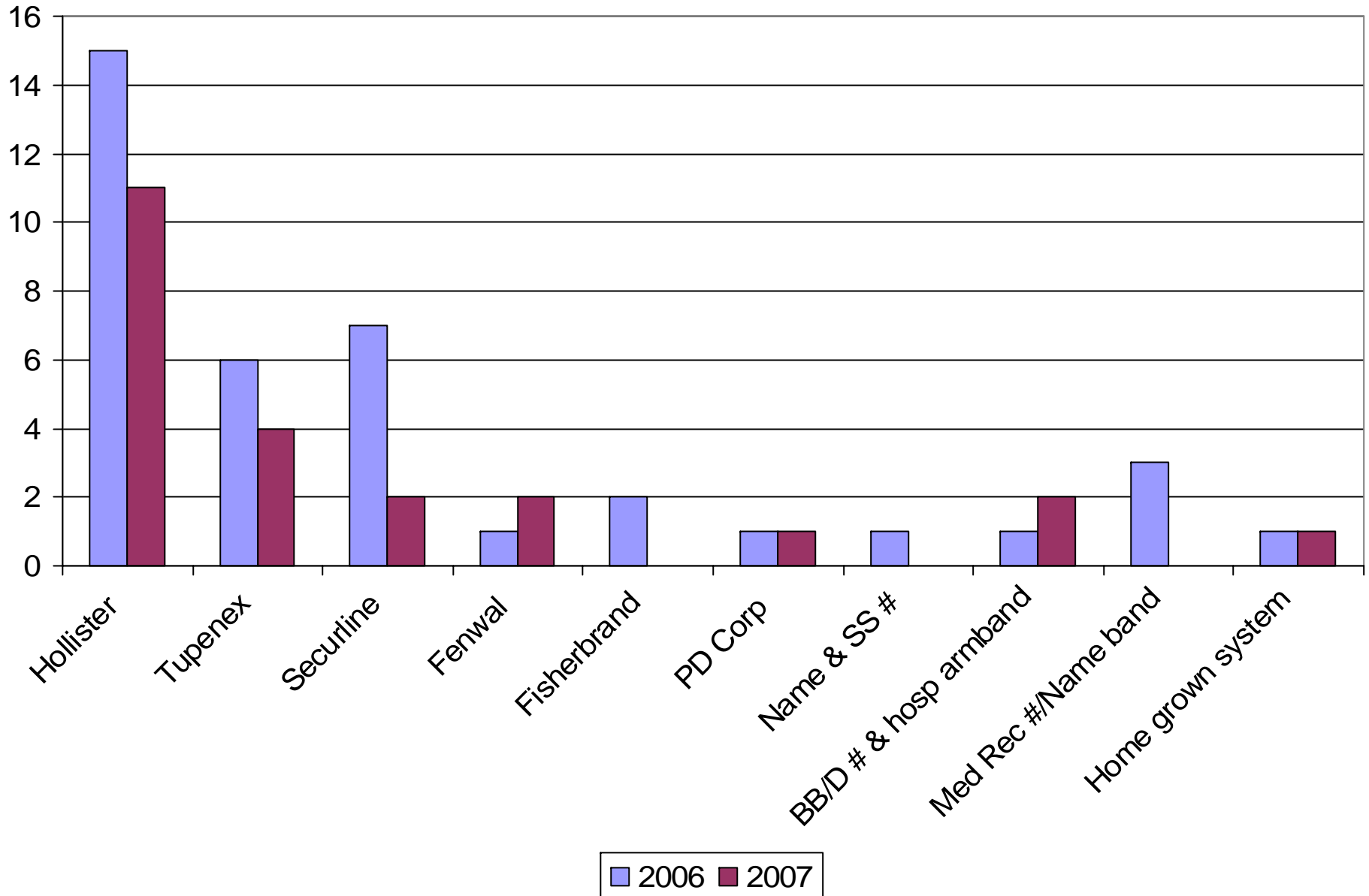
## Facility Comparison - Presurgical Sample Draws



## 2007 Facility Comparison - When Is the Patient "Banded?"



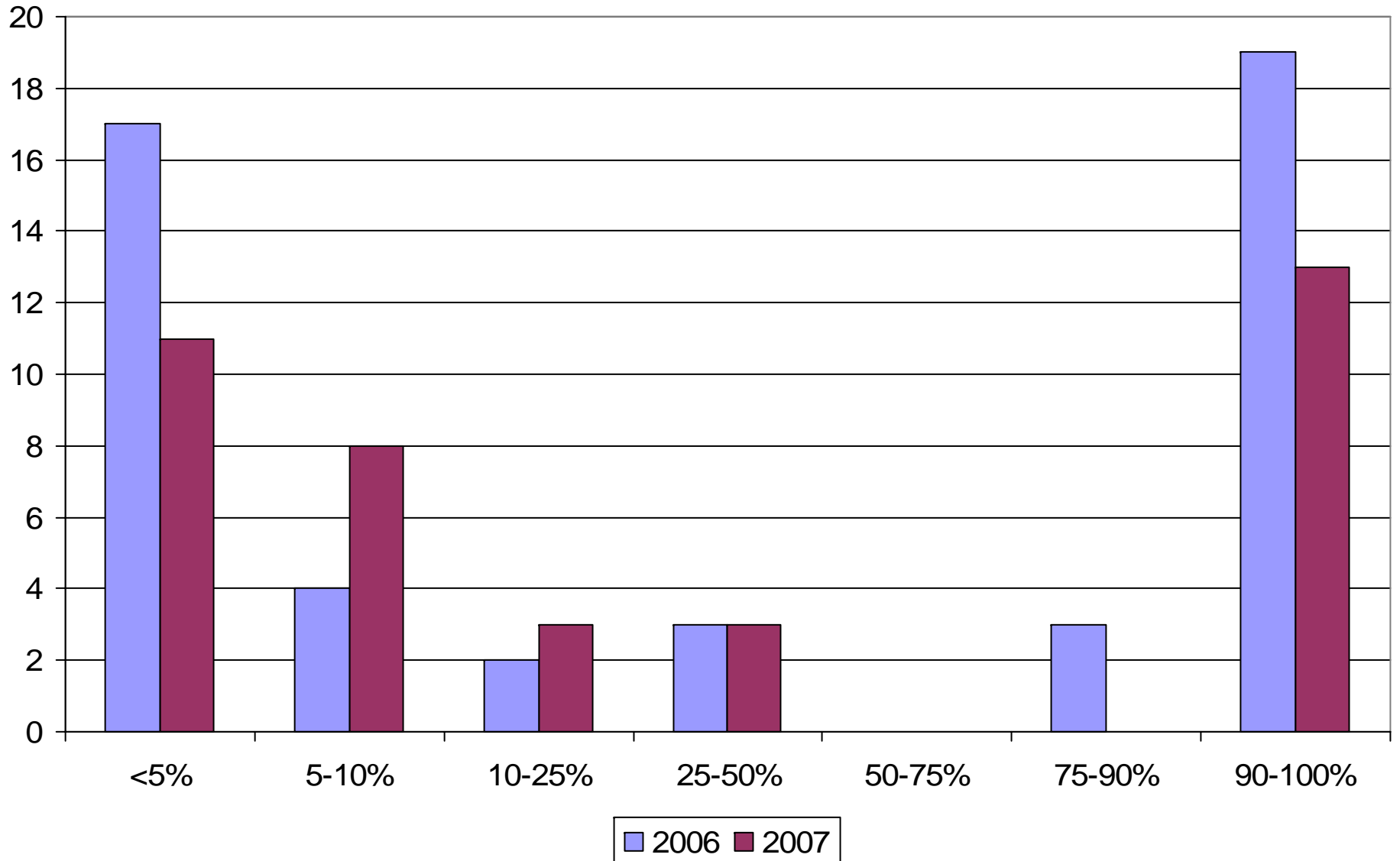
## 06-07 Types of Blood Bank Bands Used in the State of Indiana



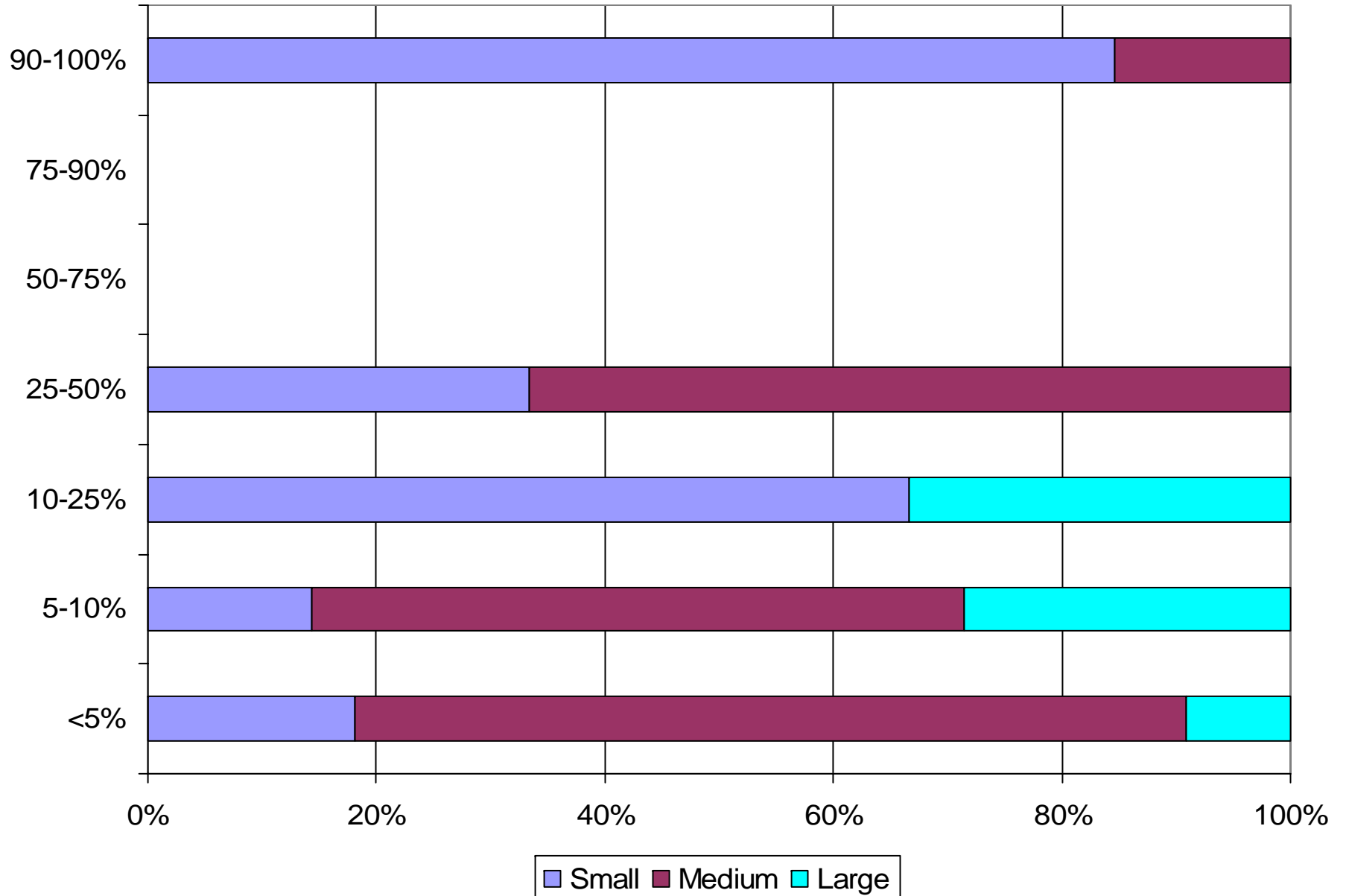
# Use of a Reference Lab

- Consistent with 2006
  - 20% of the group anticipate increased use of a regional reference lab
  - 80% of the group indicated that their Reference Lab use is anticipated to remain the same.

## 06-07 Percentage of Workload that Requires Use of Reference Lab



## Facility Comparison - Use of Reference Labs



# Transfusion Reactions

- Summary of Transfusion Reactions will be forwarded with final report

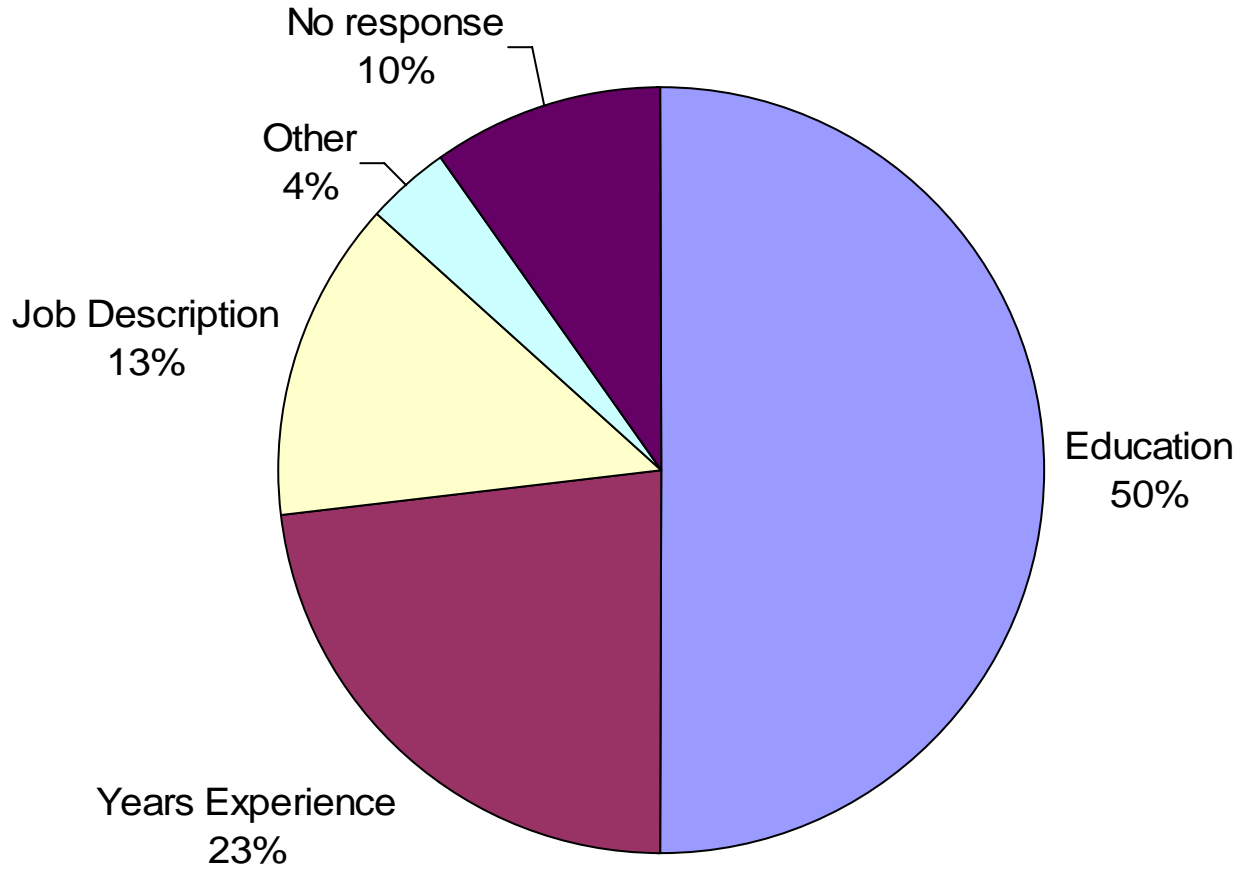
# Lab Management

- For 2007
  - This year's questions focused
    - MT vs. MLT staffing
    - Average salaries for new graduate medical technologist
    - Average salary increases
    - Implementation of CE for ASCP (CM)

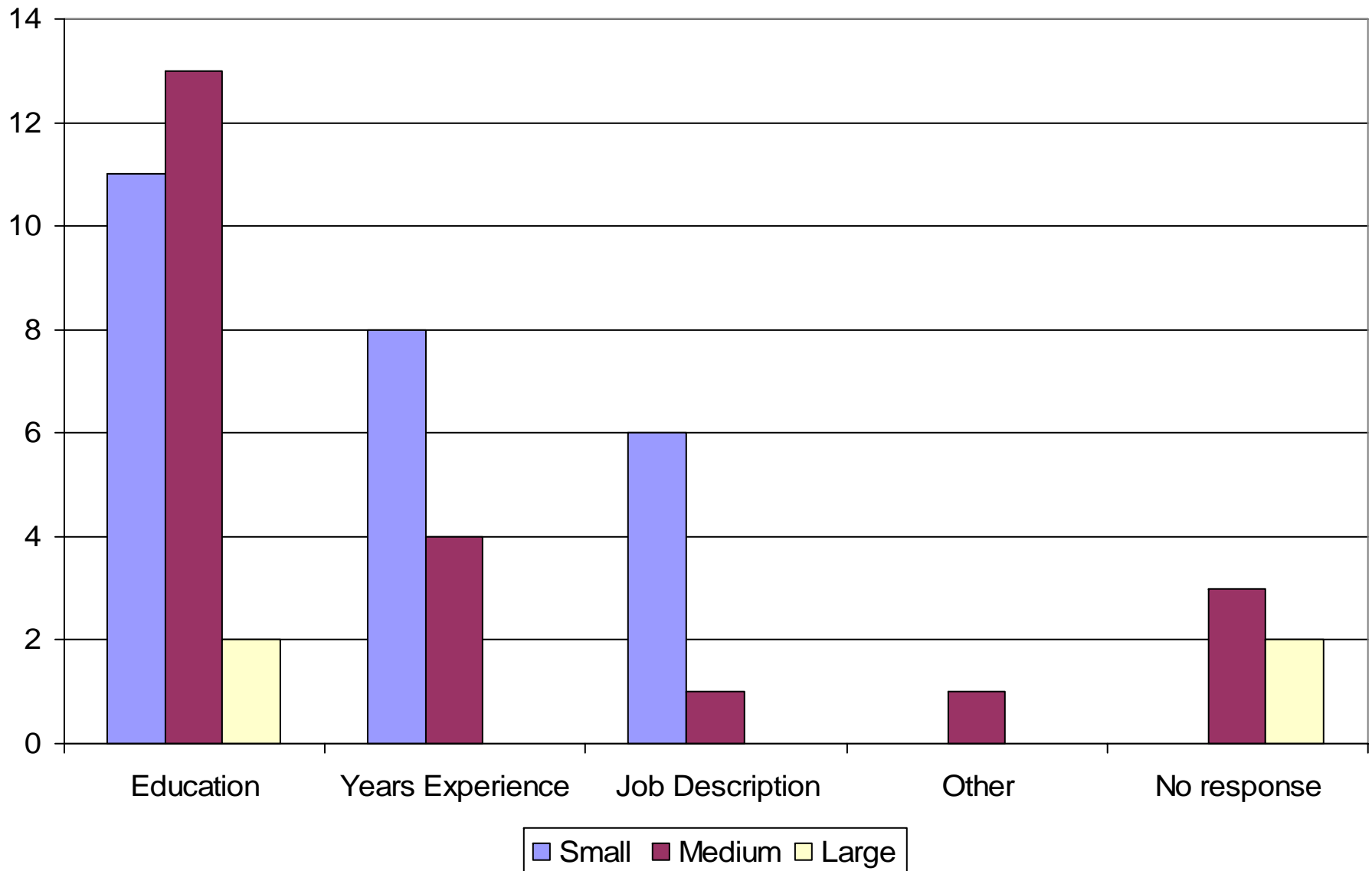
# MT and MLTs in the BB

- 92% of the response group indicated
  - MT and MLT Lab Professionals work in their blood banks
  - MT and MLT Lab Professionals have the same job tasks
- 85% of the response group indicated that although MT and MLT Lab Professionals staff the blood bank, there is a pay difference between the two certifications.
  - The basis for pay difference is summarized in the next chart.

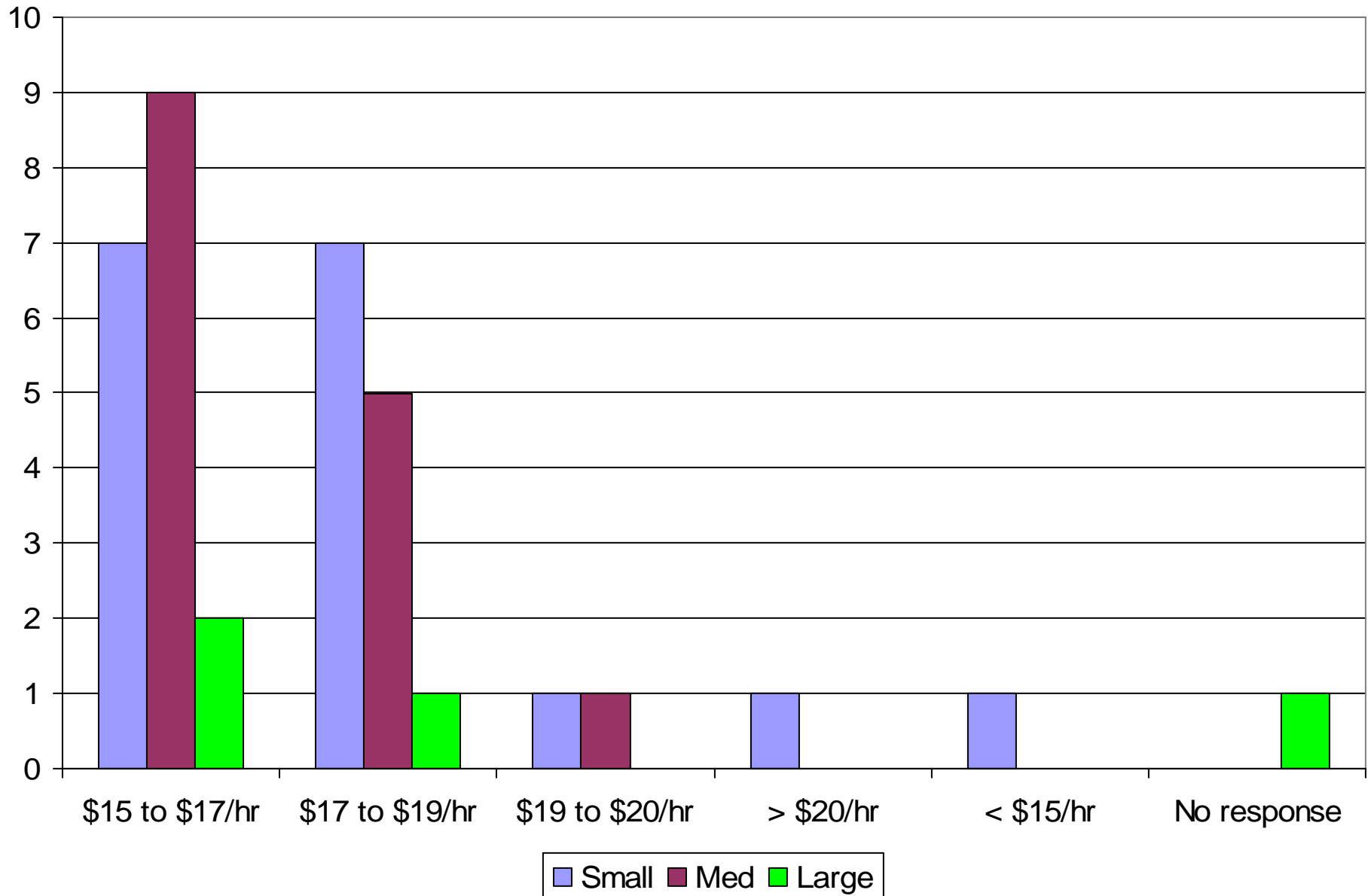
## 2007 Reasons for Salary Difference Between MT and MLT



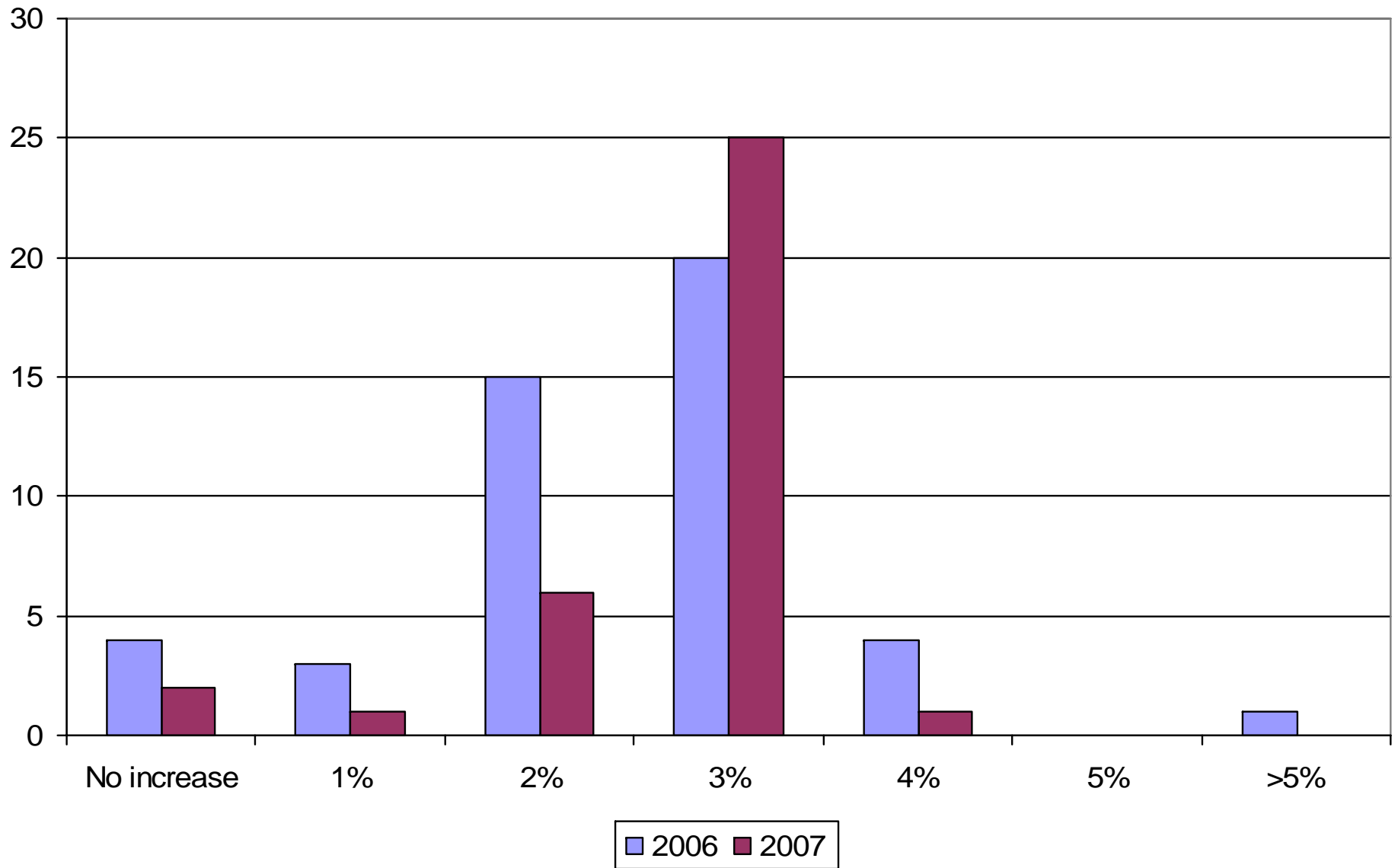
## Facility Size Comparison - Reasons for Pay Difference MLT Vs MT



## Facility Comparison - New Graduate Salary Survey 2007



## 06-07 Average Annual Increase in State of Indiana BB



# New CE Requirement

- 50% of the response group indicated that they were aware of the ASCP continuing education requirement for certification.
- The response group indicated many different ways that CE is offered to the lab to retain certification.

# 2006 Preliminary Summary

- The final analysis will be correlated and returned by fax and emailed to the facilities

# Special Thanks

- Thank to all the facilities that responded!
- Thanks to the ISABB 2007 Survey Reviewers

